

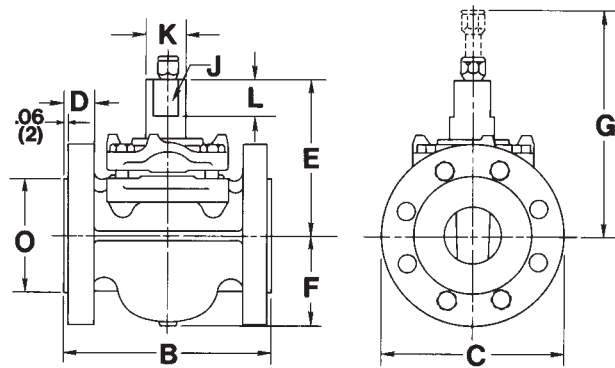
# Nordstrom Screwed Gland-Type Iron Plug Valves

## Short Pattern

400 CWP (27.6 bar)

800 psig (55.2 bar) Test

Figure 305 – Flanged, Wrench-Operated, Sizes 2, 3 and 4



Size	NPS DN	2 50	3 80	4 100
Face-to-face, flanged (include 1/16" raised face), Figure 305	B	7.25 184	9.25 235	10.50 267
Diameter of flange	C	6.5 165	8.3 211	10.0 254
Thickness of flange (include 1/16" raised face)	D	1.06 27	1.19 30	1.50 38
*No. and size of tapped holes in each flange	—	four 5/8"	two 3/4"	
Center to top of stem	E	5.7 145	7.0 178	7.5 191
Center to bottom of body	F	3.3 84	4.3 109	4.8 122
Clearance required to remove sealant fitting	G	8.3 211	9.6 244	10.1 257
Width of stem flats	J	1.12 28	1.38 35	1.38 35
Diameter of stem	K	1.59 40	1.97 50	1.97 50
Height of stem flats	L	1.4 36	1.8 46	1.8 46
Diameter of 1/16" raised face	O	4.1 104	5.6 142	6.9 175
Size of wrench	—	K-8	M-8	M-8
Length of wrench	—	14.0 356	21.0 533	21.0 533
Size of Sealant Stick	—	B	B	B
Weight (approx.) Figure 305	—	37 17	75 34	105 48

Flanges are drilled to ANSI Class 250 Cast Iron Flange Standard Template. For drilling and bolting data, See page 40.

Figure 305 valves conform to the following standards where applicable: ANSI B16.10; API 5B; ASTM A126, Class B; and MSS SP-78. See page 34.

\*Studs or capscrews required. For sizes and lengths, see page 41.