

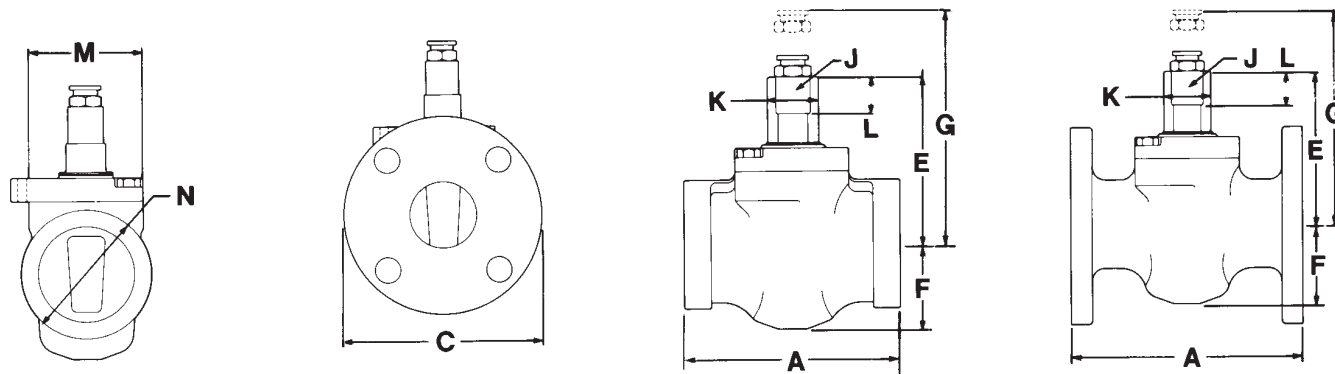
Super Nordstrom Two Bolt Cover Iron Plug Valve

Short Pattern (Gate Length)

200 CWP (13.8 bar)
400 psig (27.6 bar) Test

Fig. 142 - Threaded, Wrench Operated, Sizes 1/2 through 4

Fig. 143 - Flanged, Wrench Operated, Sizes 1 through 5



Size	NPS DN	1/2 15	3/4 20	1 25	1 1/4 32	1 1/2 40	2 50	2 1/2 65	3 80	4 100	5 125
End to end, threaded, Fig. 142	A	4.50 114	4.50 114	4.50 114	5.00 127	5.00 127	5.88 149	7.00 178	7.62 194	9.00 229	
End to end, flanged, Fig. 143	B			5.50 140	6.50 165	6.50 165	7.00 178	7.50 191	8.00 203	9.00 229	10.00 254
Diameter of flange	C			4.3 109	4.6 117	5.0 127	6.0 152	7.0 178	7.5 191	9.0 229	10.0 254
Center to top of stem	E	3.8 97	3.8 97	3.8 97	4.1 104	4.1 104	4.7 119	4.7 119	5.6 142	6.3 160	6.3 160
Center to bottom of body	F	1.9 48	1.9 48	1.9 48	2.1 53	2.1 53	2.4 61	2.4 61	3.4 86	4.0 102	4.0 102
Clearance required to remove sealant fitting	G	5.5 140	5.5 140	5.5 140	5.8 147	5.8 147	6.4 163	6.4 163	7.2 183	8.0 203	8.0 203
Width of stem flats	J	.81 21	.81 21	.81 21	1.00 25	1.00 25	1.00 25	1.00 25	1.25 32	1.25 32	1.25 32
Diameter of stem	K	1.06 27	1.06 27	1.06 27	1.38 35	1.38 35	1.38 35	1.38 35	1.75 44	1.75 44	1.75 44
Height of stem flats	L	.9 23	.9 23	.9 23	1.0 25	1.0 25	1.0 25	1.0 25	1.3 33	1.3 33	1.3 33
Extreme width of body, Fig. 142	M	2.6 66	2.6 66	2.6 66	3.2 81	3.2 81	3.2 81	3.2 81	4.0 102	4.8 122	
Diameter of hub, Fig. 142	N	2.3 58	2.3 58	2.3 58	2.9 74	2.9 74	3.6 91	4.3 109	5.2 132	6.4 163	
Size of Sealant Stick	-	B	B	B	B	B	B	B	B	B	B
Size of wrench	-	SN-1	SN-1	SN-1	SN-2	SN-2	SN-2	SN-2	SN-4*	SN-4*	SN-4*
Length of wrench	-	7.0 178	7.0 178	7.0 178	10.5 267	10.5 267	10.5 267	10.5 267	17.5 445	15.0 381	15.0 381
Weight (approx.) Fig. 142	-	6 3	6 3	6 3	9 4	9 4	13 6	17 8	29 13	48 22	
Weight (approx.) Fig. 143	-			9 4	14 6	14 6	20 9	25 11	38 17	65 29	80 36

Flanges are drilled to ANSI Class 125 Cast Iron Flange Standard Template.

Fig. 142 and 143 valves conform to the following standards where applicable: ANSI B1.20.1; ANSI B16.1; ANSI B16.10; API 5B; ASTM A126, Class B; and MSS SP-78.

Fig. 143 face to face lengths are interchangeable with ANSI Class 125 and API 175 CWP Cast Iron Gate Valves.

Fig. 142 and 143 valves size 5 (125 mm) and smaller are not recommended for temperatures above +200°F (+93°C).

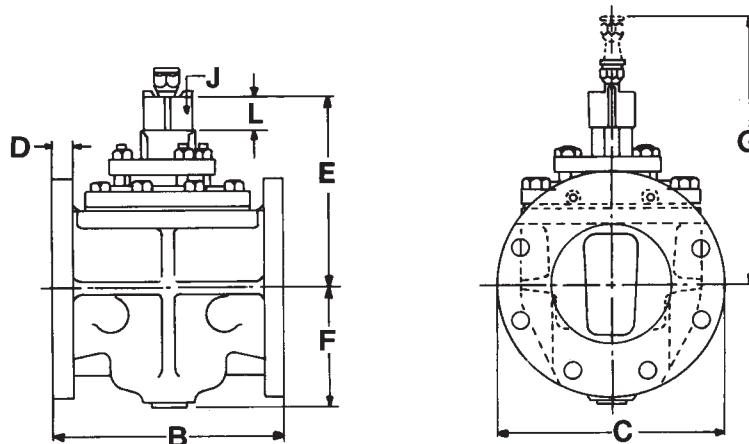
* Use the longer SN-3 wrench for valves used in cold climates such as Canada.

Nordstrom Bolted Gland-Type Iron Plug Valves

Short Pattern (Gate Length)

200 CWP (13.8 bar)
400 psig (27.6 bar) Test

Figure 143 – Flanged, Wrench-Operated, Sizes 6, 8 and 10



Size	NPS DN	6 150	8 200	10 250
Face-to-face, flanged, Figure 143	B	10.50 267	11.50 292	13.00 330
Diameter of flange	C	11.0 279	13.5 343	16.0 406
Thickness of flange	D	1.06 27	1.19 30	1.25 32
*No. and size of tapped holes in each flange	—	two 3/4"	two 3/4"	two 7/8"
Center to top of stem	E	9.6 244	11.9 302	14.2 361
Center to bottom of body	F	5.4 137	7.1 180	9.2 234
Clearance required to remove sealant fitting	G	13.6 345	16.9 429	19.2 488
Width of stem square	J	1.75 44	2.00 51	2.00 51
Height of stem square	L	1.8 46	2.0 51	2.1 53
Size of wrench	—	P-2	T-2	T-2
Length of wrench	—	27.0 686	36.0 914	36.0 914
Size of Sealant Stick	—	D	G	G
Weight (approx.) Figure 143	—	137 62	230 104	356 161

Flanges are drilled to ANSI Class 125 Cast Iron Flange Standard Template. For drilling and bolting data, See page 40.

Figure 143 valves conform to the following standards where applicable: ANSI B16.1; ANSI B16.10; ASTM A126, Class B; and MSS SP-78. See page 34.

Figure 143 face-to-face lengths are interchangeable with ANSI Class 125 and API 175 CWP Cast Iron Gate Valves.

*Note: Studs or capscrews required. For sizes and lengths, see page 41.